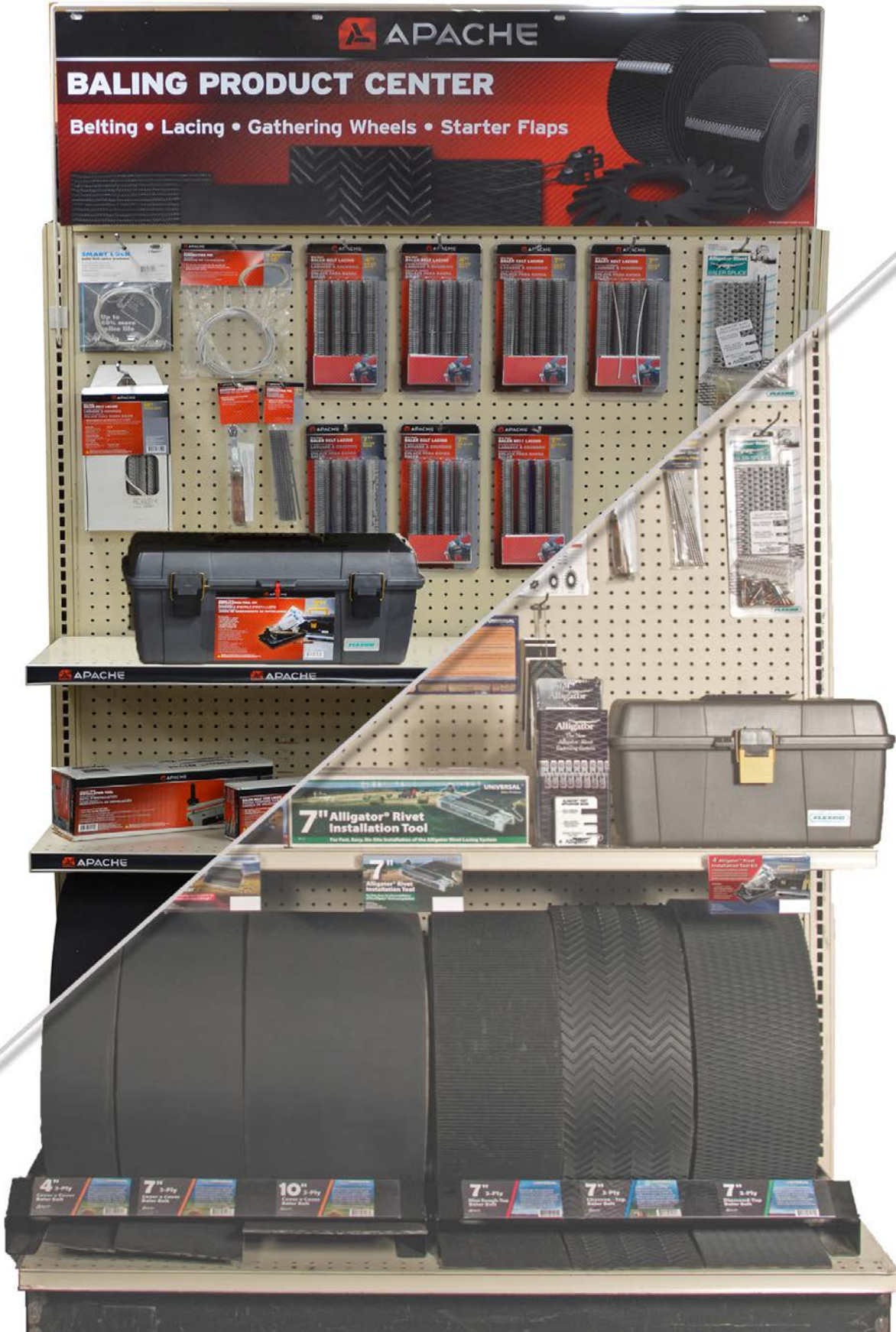
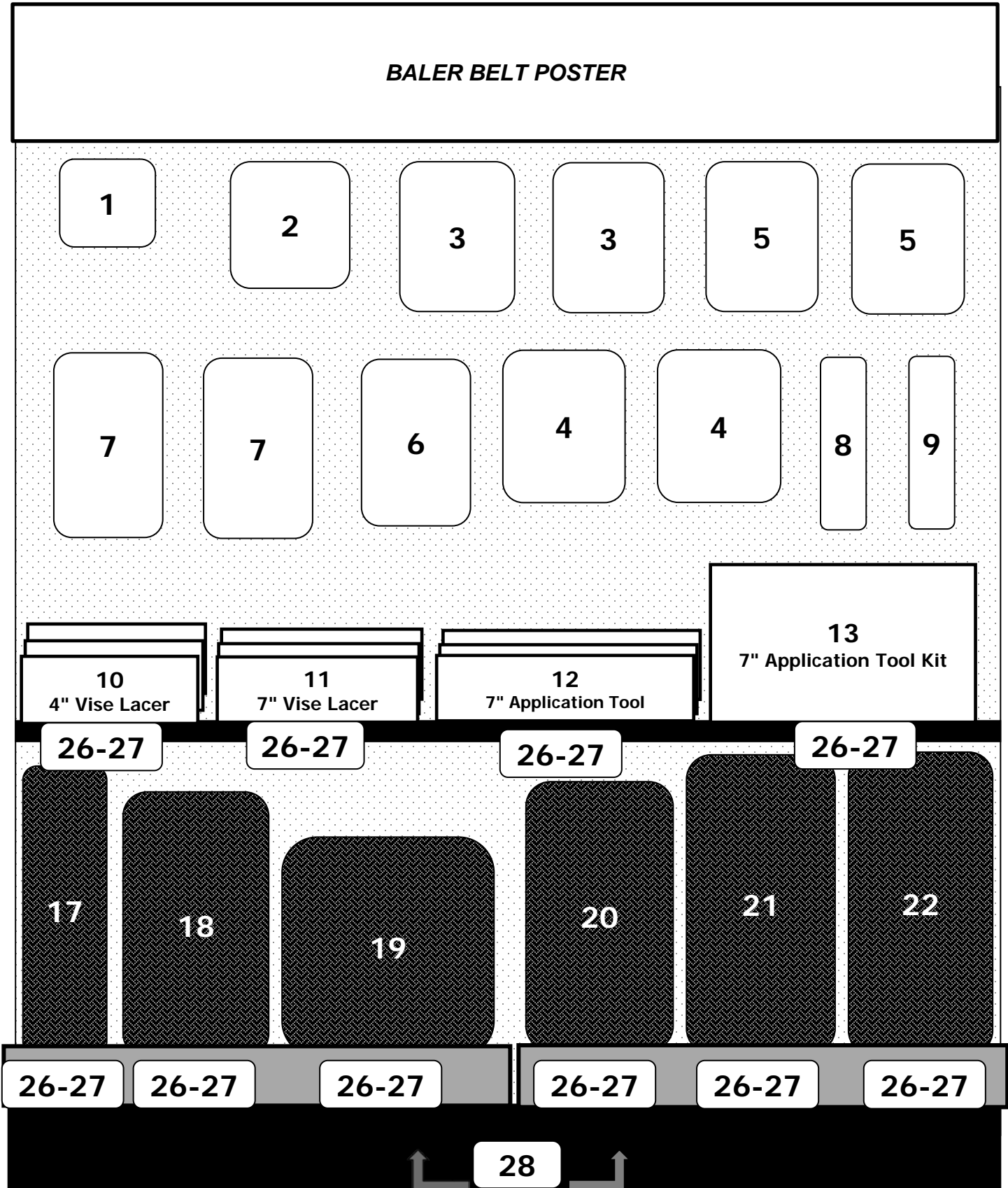


4' BALER BELTING DISPLAY



4' BALER BELTING DISPLAY

BALER BELT POSTER



4' BALER BELTING DISPLAY



POG#	PART#	UPC	DESCRIPTION	QTY
Pin, Lacing, and Hand Tools				
1	25050698	7-25559-83621-3	Clipper® Duralink .109 Smart Lock Package	4
2	25050686	7-25559-81176-0	Clipper® Duralink .109 Connecting Pin (15')	4
3	25047048	6-97598-01435-1	Clipper® 3-4-1/2 HT 4-7" cards w/.109 Connecting Pin	4
4	25047059	7-25559-81175-3	Clipper® 4-1/2 RHTX 8-4"cards w/.109 Connecting Pin	4
5	25047060	6-97598-18799-4	Clipper® 4-1/2 RHTX 4-7"cards w/.109 Connecting Pin	4
6	25047062	7-25559-37354-1	Clipper® 4-1/2 RHTX 8-10"cards w/.109 Connecting Pin	4
7	25085381	6-97598-15001-1	7" Alligator® SS Rivet Lace 4-7" strips w/ Rivets & Pin	6
8	25050705	7-25559-03150-2	Roughtop Belt Skiver Tool	4
9	25085423	7-25559-83624-4	Alligator® Rivet Corrugated Replacement Pins (6ea)	4
Lacer and Application Tools				
10	25049500	7-25559-03136-6	Clipper® 4" Vise Lacer	3
11	25049505	7-25559-03137-3	Clipper® 7" Vise Lacer	3
12	25085386	6-97598-15004-2	7" Alligator® Rivet Hand Application Tool (ART-7)	2
13	25085392	7-25559-83463-9	7" Alligator® Rivet Application Tool Kit (ARTK-7)	1
Bulk Belting Specifications				
17	21200560	7-25559-15061-6	4"x90' 3-Ply Impression Top	1
18	21200561	7-25559-81167-8	7"x80' 3-Ply Impression Top	1
19	21200562	7-25559-81168-5	10"x55' 3-Ply Impression Top	1
20	21200564	7-25559-81169-2	7"x80' 3-Ply Mini Roughtop	1
21	21200566	7-25559-81170-8	7"x70' 3-Ply Continuous Chevron	1
22	21200568	7-25559-81171-5	7"x60' 3-Ply Diamond Top	1
Display Components & P.O.P.				
23	99002327-3HDR	7-25559-83498-1	4' Baler Belt Display Header	1
24	99002672-4	7-25559-70155-9	4' Display Header Bracket Set	1
26	99002446	7-25559-36306-1	Display Shelf Talker Holders	10
27	99002650-3ST	7-25559-83477-6	4' Baler Display Shelf Talker Set	1
28	20000008-V2	7-25559-83471-4	Baler Belt Stand (Low Profile)	2
	99002638	7-25559-25910-4	24" Apache Shelf Strip	6