

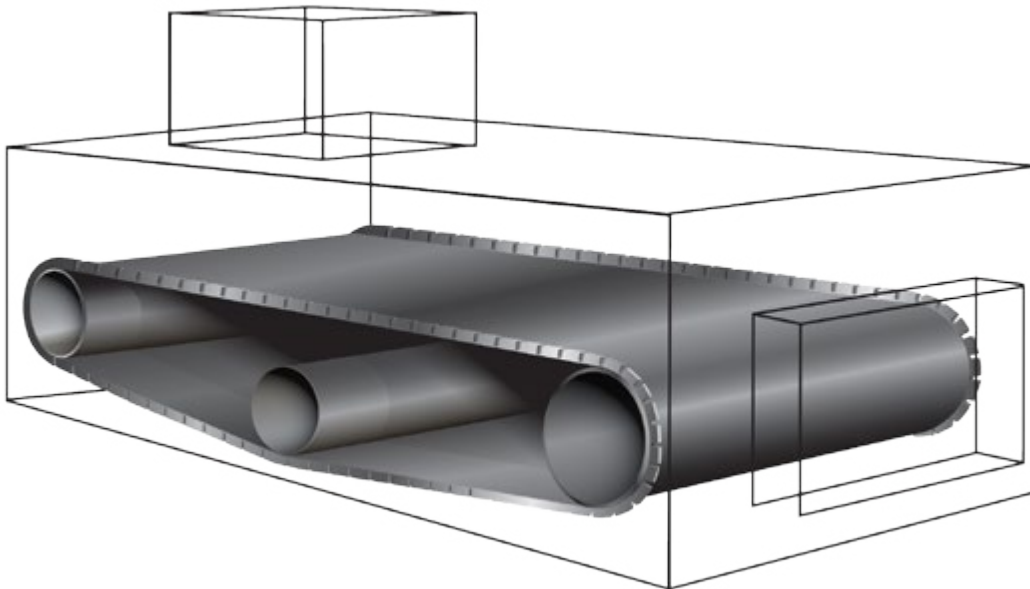
# DUROCOAL™ FEEDER BELTS



At Apache we understand the needs of the energy sector. Time is money – that's why we take pride in creating you and your customers a superior performing product.

Our Durocoal™ feeder belts provide:

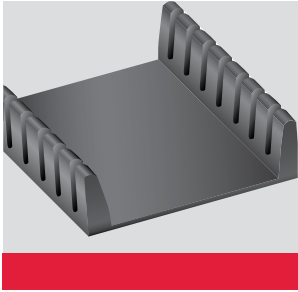
- ▶ Tough 2-ply 220# P.I.W. belt carcass construction
- ▶ Integrally manufactured single piece construction for durability and dependability
- ▶ Vanner edges, bottom V-guide, and belt covers are made at the same time, creating a superior performing product
- ▶ Factory molded, notched vanner edge ensures flexibility and improved weighing accuracy
- ▶ Integrally molded, notched bottom tracking guide guarantees belt will track the first time, every time



## BELT SPECIFICATIONS

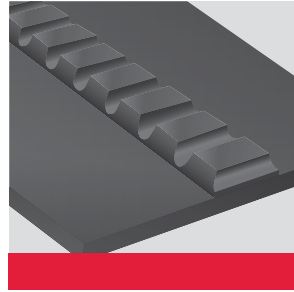
WIDTH	MOLDED VANNER EDGE	BOTTOM TRACKING GUIDE	SPLICE	WEIGHT PER FOOT (LBS)
<b>2-PLY 220# 1/8" X 1/16" GRADE 2</b>				
33"	1-1/2" High, Notched	1-5/16" Wide x 13/32" Tall (std-v)	Mechanical Fasteners, Rubber Covered, Vulcanized Endless	6.2
46"	1-1/2" High, Notched	1-3/4" Wide x 1-7/32" Tall (wide-v)	Mechanical Fasteners, Rubber Covered, Vulcanized Endless	7.9
<b>2-PLY 220# 5/32" X 3/32" MSHA</b>				
33"	1-1/2" High, Notched	1-5/16" Wide x 13/32" Tall (std-v)	Mechanical Fasteners, Rubber Covered, Vulcanized Endless	7.4
46"	1-1/2" High, Notched	1-3/4" Wide x 1-7/32" Tall (wide-v)	Mechanical Fasteners, Rubber Covered, Vulcanized Endless	9.9

# FLANGES, V-GUIDES, FASTENERS, & SPLICING



## FLANGE

- ▶ Integrally manufactured molded, notched vanner edge for maximum flexibility and durability
- ▶ Molded, notched vanner improves weighing accuracy and performance



## V-GUIDE

- ▶ Integrally molded U-notch bottom tracking guide for flexibility and weighing accuracy

## FASTENERS

▶ **Flexco® Staple:**  
RS125 & RS187

▶ **Flexco® Rivet:**  
R2 & R5

▶ **Minet:**  
Type A & Type Super A Rivet

## SPLICING

### STANDARD MECHANICAL

Fasteners are available from Flexco and Minet for most splicing applications. This is a cost effective splice for quick and easy belt change outs.

### HIDDEN TOP COVER

A mechanical fastener is installed under the top belt cover. Belt surface remains smooth and eliminates Product fines from falling through the splice, reducing the chance that the cleaner/scrapper will snag on the splice.

### HIDDEN BOTTOM COVER

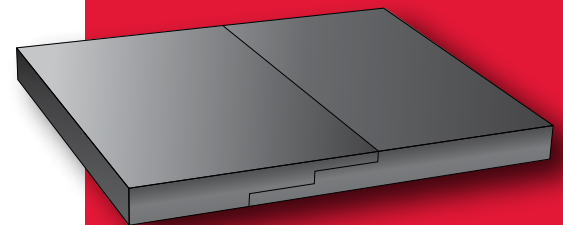
A mechanical fastener is installed under the bottom belt cover, protecting the components from wear.

### HIDDEN TOP/BOTTOM COVERS

Features the best of both, a top and bottom splice cover, with the convenience of a mechanical splice, for quick and easy belt change outs.

### VULCANIZED ENDLESS

A vulcanized splice is extra strong and flexible to ensure a long, dependable life. It requires a longer installation time than mechanical fasteners.



**CORPORATE OFFICE** 4805 Bowling Street SW / Cedar Rapids, IA 52404

**INDUSTRIAL SALES** 800.553.5455

**CONSUMER PRODUCTS** 800.459.8423

**FAX** 319.365.2522

**WEBSITE** [www.apache-inc.com](http://www.apache-inc.com)



rev031017